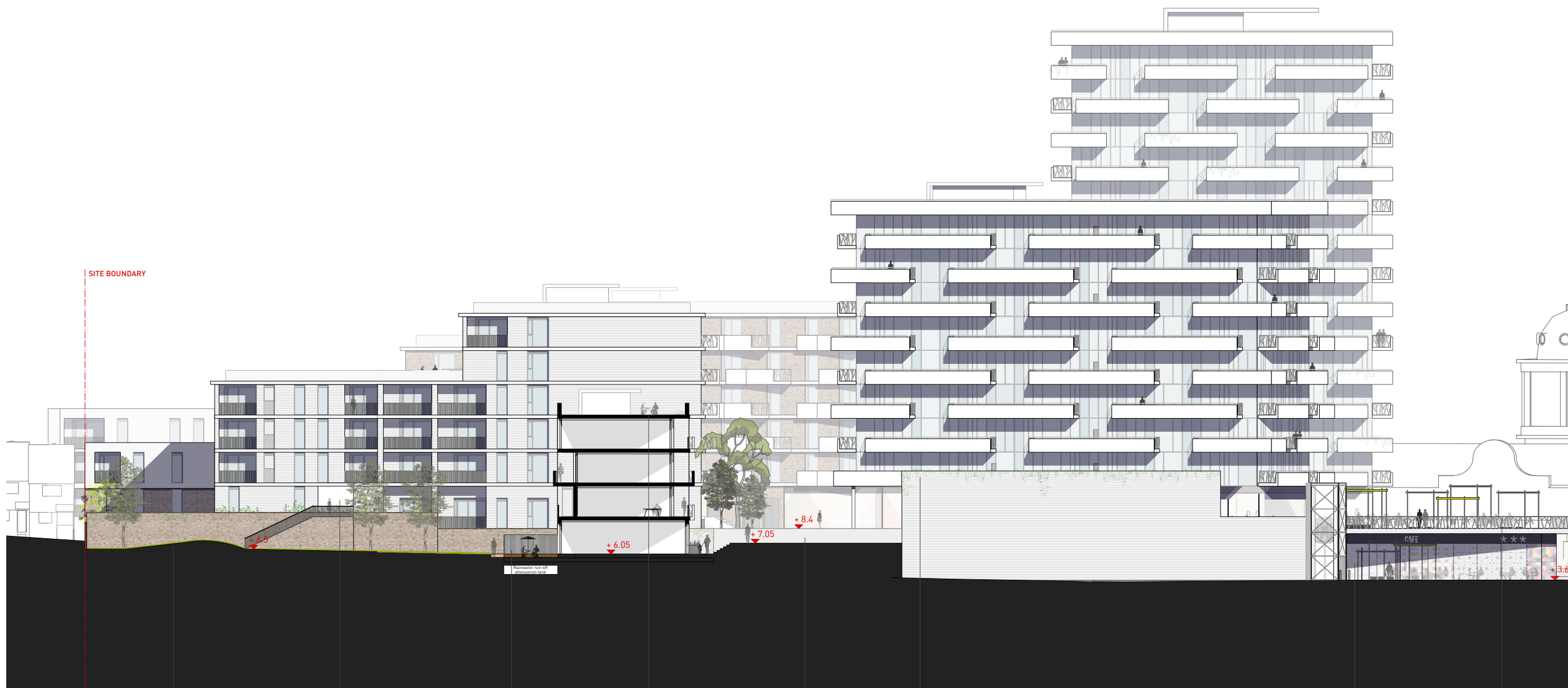


NOTES:
 For building materials refer to drawings PL20 - PL26.
 Position and number of art canopies are shown for illustrative purposes.



A 16.01.2015 Depth of balconies to Blocks A & F extended by 200mm. Glazing to Blocks A & F continues across slab edge. Material clarification through introduction of colour. Upper parapet to Blocks A & F remodelled to form continuous capping piece. Levels modified in Block E to address flood issues.

rev	date	description
A		ADJUSTED FOLLOWING REVISIONS TO THE POSITION OF MARINE PARADE STAIRCASE & LIFT

stock wool

The Pump House 19 Hooper Street
 London E1 8BU 020 7264 8600
 info@stockwool.co.uk

Client
Crestbury Developments Ltd

Project
MARINE PLAZA

Drawing
**Elevation/Section J
 Block F, D & E**

Status
PLANNING

Scale: 1:200 @ A1
 CAD File: Section J
 Date: January 2015
 Drawn: HH/AT/AT
 Checked: JS

Project No	Drawing No	Revision
3202	PL210	A

Any errors and omissions to be reported to the Architect prior to commencement. Dimensions and areas are based on survey information provided by the client. This drawing is copyright © STOCKWOOL. All dimensions to be checked on site. Do not scale.